

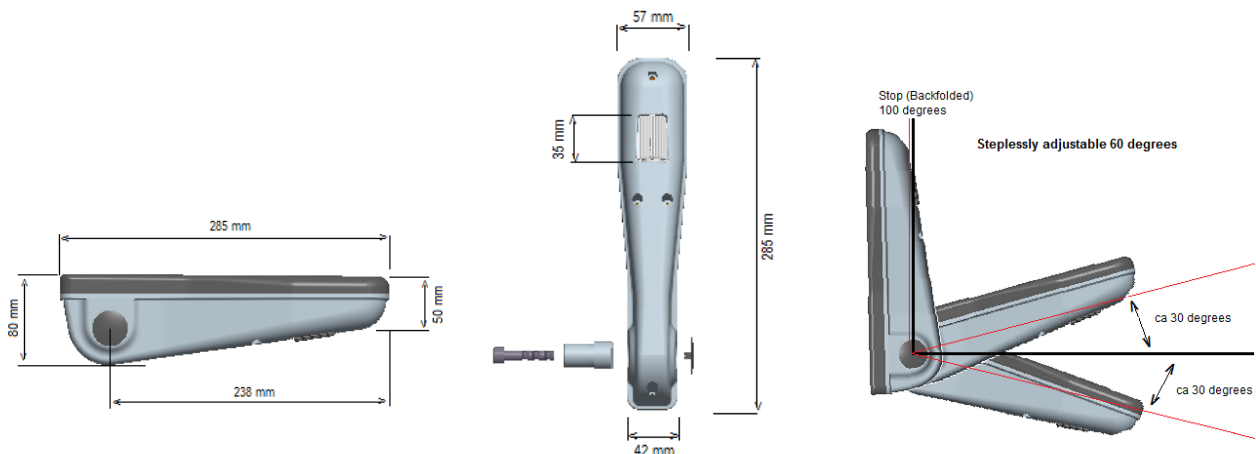


Armrest model - ML285



Armrest model ML285 is recommended for cars and certain light trucks. Choose from different materials and colours on the top-cover and the armrest-base. The top-cover materials are PUR, textile or leather. The armrest-base materials are Polyamide, Fiber-coated or Painted surface. See our variety of standard armrest on the next page.

We can also offer unique colour and material matches with exclusive attributes for example, special editions. Create a greater visual experience with a specially designed armrest -custom made to match the car's interior. For more information -please contact Sydmeko Industri AB.



Technical Specifications

Weight:	0,7 kg (incl. the axle)	
Load capacity:	Downward:	100 Kg
	Sideway:	50 Kg
	Backward:	50 Kg
Material:	Armrest Base:	Polyamide (PA 6)
	Top-cover:	PUR
	Chassie:	Steel
Possible features:	Armrest-Base:	Polyamide, Fibercoated or Painted surface
	Top-Cover:	PUR, Textile or Leather
Other:	The armrest is "universal" and can easily be changed from left to right -side fitting. Available in various features, colours and material in both textile and leather. For more information -please contact Sydmeko Industri AB.	

Professional Armrest Solutions - For a Better Drive



Armrest-base in Polyamide and top-cover in Textile/Vinyl



ML285-P10T10
Black-Black



ML285-P10T11
Black-Black Anthracite



ML285-P21T21
Light grey-Light grey



ML285-P30T30
Beige-Beige



ML285-P10V10
Black-Black

Armrest-base in Polyamide and top-cover in Leather



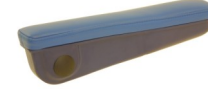
ML285-P10L10
Black-Black



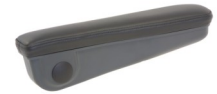
ML285-P10L21
Black-Light grey



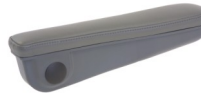
ML285-P10L30
Black-Beige



ML285-P10L90
Black-Smart blue



ML285-P20L10
Dark grey-Black



ML285-P20L20
Dark grey-Dark grey



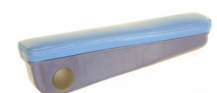
ML285-P21L10
Light grey-Black



ML285-P21L21
Light grey-Light grey



ML285-P30L30
Beige-Beige



ML285-P90L90
Smart blue-Smart blue

Armrest-base in Polyamide and top-cover in PUR



ML285-P10P10
Black-Black

Armrest-base in Painted surface and top-cover in Leather



ML285-S10L10
Black-Black



ML285-S84L10
Graphite-Black



ML285-S86L10
Silver-Black

Professional Armrest Solutions - For a Better Drive



Armrest-base in Fiber-coated and top-cover in Textile



ML285-F11T10
Black Anthracite-Black



ML285-F11T11
Black Anthracite-
Black Anthracite



ML285-F21T21
Light grey-Light grey



ML285-F30T30
Beige-Beige

Armrest-base in Fiber-coated and top-cover in Vinyl



ML285-F11V10
Black Anthracite-Black

Armrest-base in Fiber-coated and top-cover in Leather



ML285-F11L10
Black Anthracite-Black



ML285-F11L21
Black Anthracite-
Light grey



ML285-F11L30
Black Anthracite-
Beige



ML285-F20L20
Dark grey-Dark grey



ML285-F21L10
Light grey-Black



ML285-F21L20
Light grey-Light grey



ML285-F30L10
Beige-Black



ML285-F30L30
Beige-Beige