

INSTRUCTION

Attention:

This adapter/bracket is an "exchange" adapter that makes it possible to replace the original mounted armrest with a "MLC310" centre Comfort armrest - which will offer you a more convenient drive due to it's adjustable features and practical storage compartment box.

Please note that this adapter only is adaptable with the armrest type "MLC310" and only can be mounted on seats that already is equipped with an original mounted armrest.

For more information about adapters suitable for other type of seats -please contact your dealer or visit Comfort's official homepage where you will find information about adaptations for more than 200 different car models.

www.armrest.info

Innehåll / Content / Inhalt:

- 1 st MLC310 Armrest with pre-mounted bracket.
- 1 st Cover-ring (pre-mounted)
- 1 st M8-screw w. Socket
- 1 st PVC Cap (for M8)
- 1 st "Key-hook" tool
- 1 st Insex-key 5 mm

SMI Kit No:

- 13-310PT10-X14R (LHD)**
- 13-310PV10-X14R (LHD)**
- 13-310PT10-X14L (RHD)**
- 13-310PV10-X14L (RHD)**

Bil/ Car/ Auto Model: År / Year / Jahre:

DACIA **All models** **2015 -**

Only for models with standard mounted armrests!

Adapter No: FS1330-F014R (LHD) or FS1330-F014L (RHD)

Tillverkad av /Manufactured by/ Hersteller:

Sydmeke Industri AB

Santessonsväg 3, 232 61 Arlöv, Sweden
Phone: +46 40 83640, Fax: +46 40 89090
E-mail: office@sydmeko.se
Homepage: www.sydmeko.com

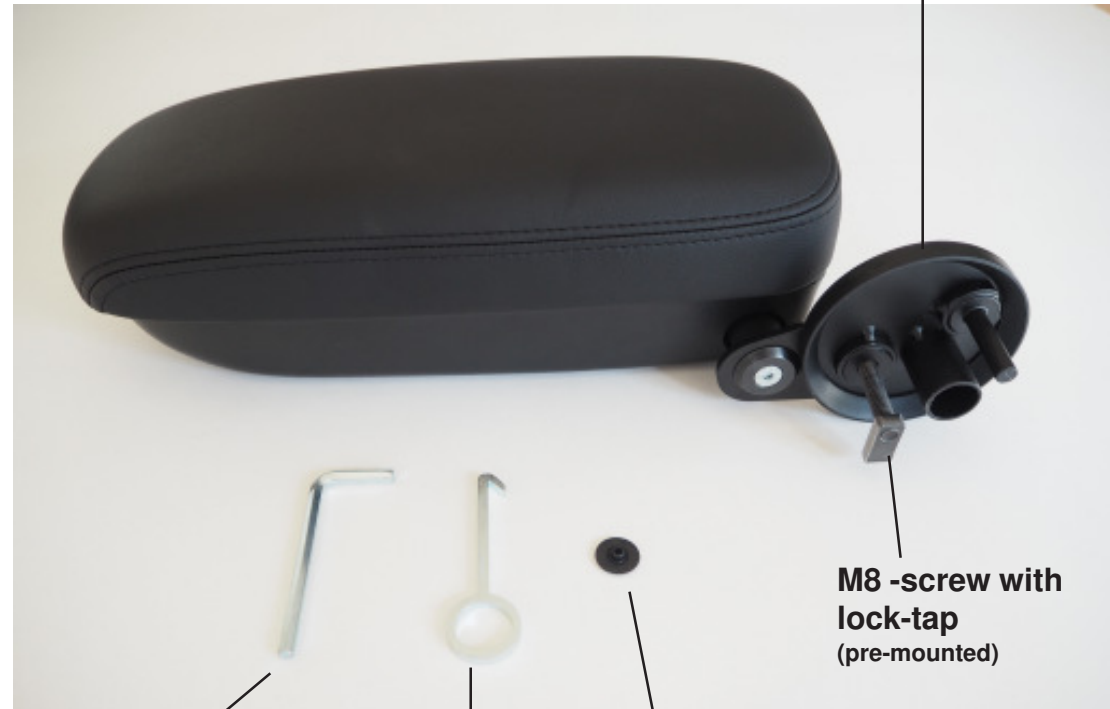
Comfort[®]
ARMREST SYSTEM

®-registered trademark of Sydmeke Industri AB

Kit Content X-change Adaption

MLC310 Armrest
with adjustment & storage copartment

Adapter plate / Bracket
with cover-ring (pre-mounted)



Insex-key
(for M8 Hex-screw)

Key-hook Tool
(To remove the old armrest)

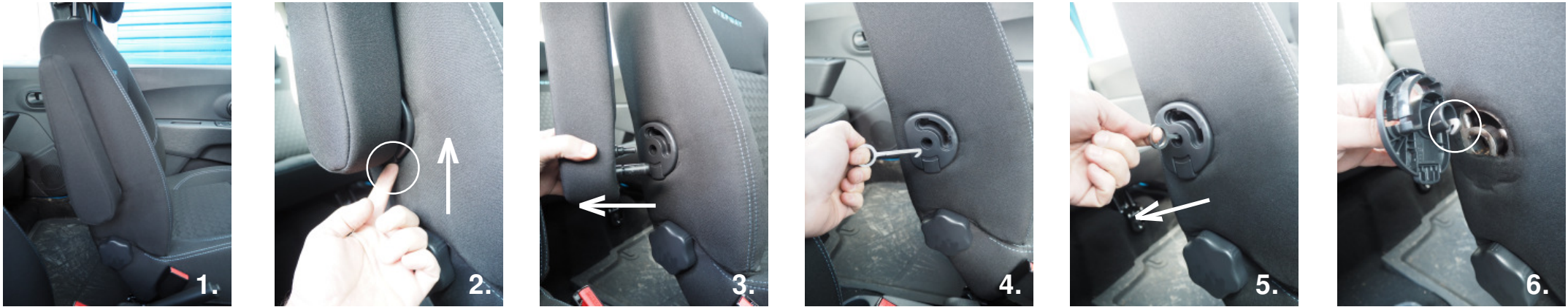
PVC Cap
(for M8 Hex-screw)

M8-screw with lock-tap
(pre-mounted)



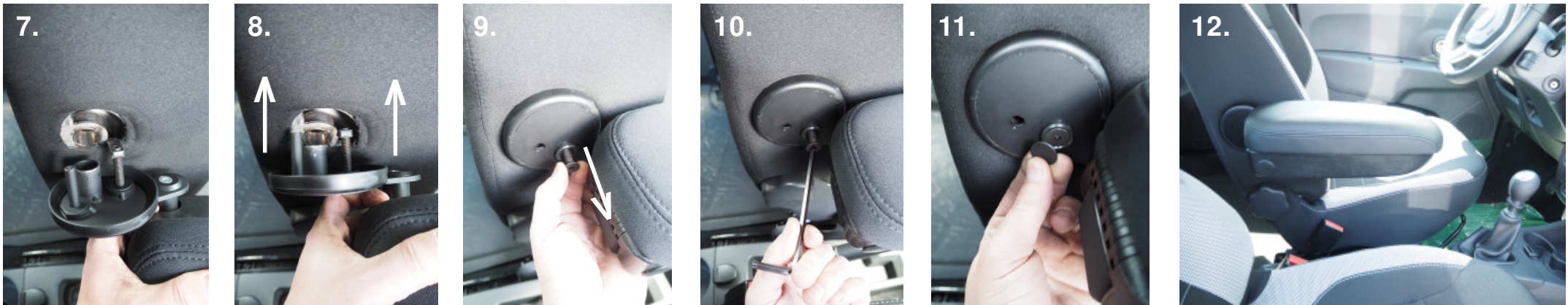
If you have any questions regarding the mounting procedure or want to learn more about the Comfort Armrest System -please contact your dealer or Sydmeke directly for further assistance.

Mount the armrest like this:



Remove the original armrest by pushing the lock-spring on the plastic cover panel -then fold down the armrest and pull it outwards until it is released.

Remove the plastic cover panel by placing the enclosed «key-hook tool» in the center hole. Make sure that the hook tool is grabbing the lower front hook on the cover panel (see pict.6). Then pull straight outwards until the plastic cover panel is released!



Mount the armrest /adapter bracket as the picture shows. Make sure the M8-screw with lock-tap is facing downwards when you mount it. When the adapter is in place -pull the M8-screw outwards and then tighten the screw (approx 5-6Nm). Finally mount the enclosed plastic cap over the M8 screw. Now you can fold the armrest up and down and adjust it into a nice and relaxing position -by turning the adjustment wheel on the underside of the armrest. Pull up the handle at the front of the armrest to access the practical compartment box. END OF INSTRUCTION!